



halo is a highly intuitive online tool that provides you with clear, comprehensible data, including energy, carbon, and cost which enables you to effortlessly understand how well your building or estate is performing.



Fully in-cloud, halo can track multiple clients, multiple site and multiple data feeds, world-wide, on any device.

It can be used straight out-of-the-box or can be customised by our team to create a bespoke tool producing reports, visualisations and graphs specific to your needs.

Bringing together all your utilities, from all your suppliers, on one easy-to-use dashboard.

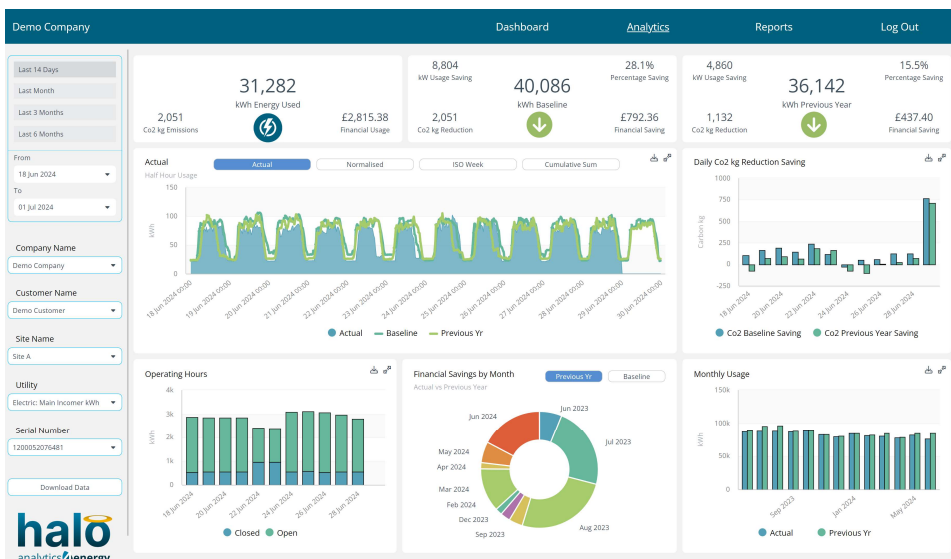
Aggregating and displaying many forms of data including baseline data, previous year data and tariff data.

halo easily tracks usage information including operation hours, estimated dropped data and trends.

Used in tandem with our building management tool **livesight**, it can help support energy saving actions and provide notifications on issues that require your attention.

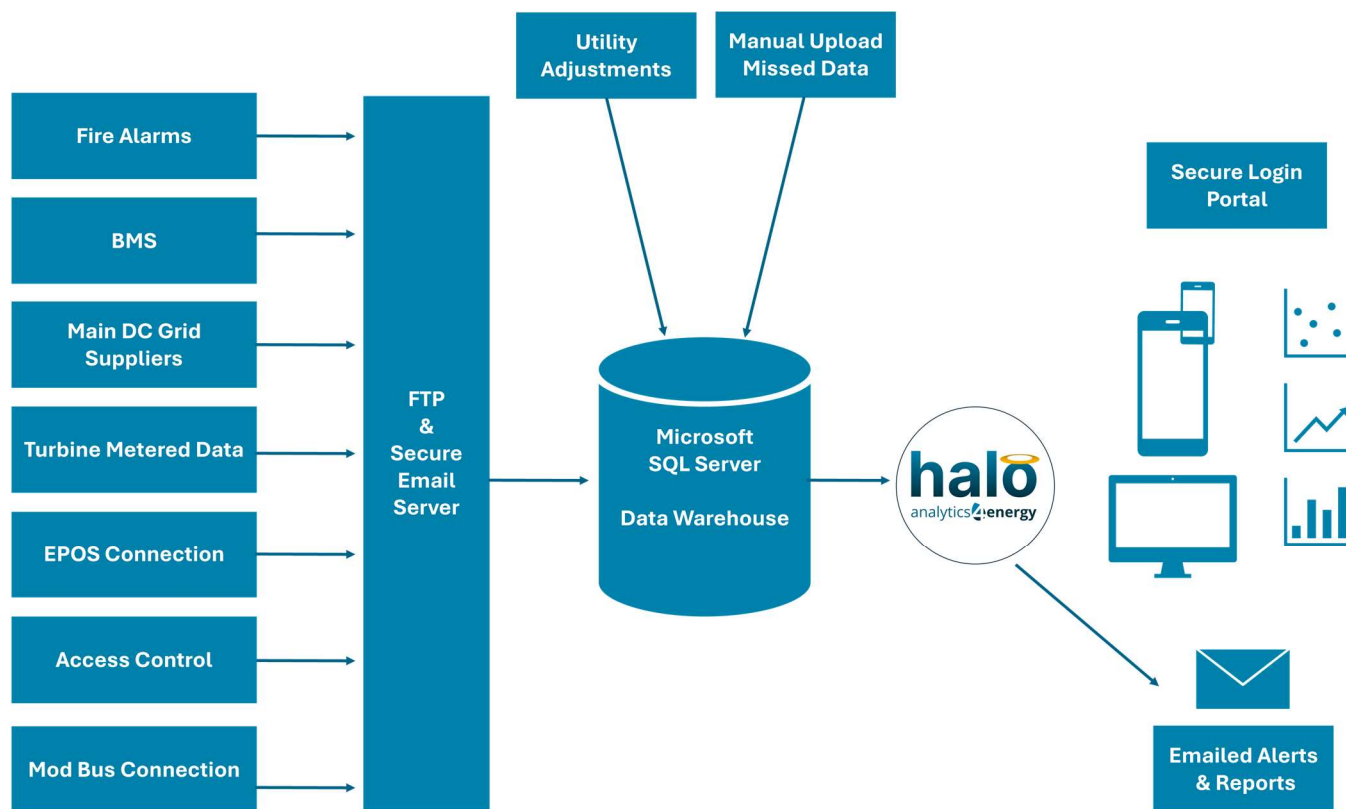
Completely scalable, halo can work with in excess of one million data points.

Exception Reports help you identify breaches in your energy profile.



Who can benefit from using halo?

Property Owners
Facilities Managers
Construction Managers
Landlords
Estate Managers
Main Contractors
Asset Managers
Energy Managers



What data can halo use?



halo is a powerful, yet user-friendly tool that helps clients optimise their buildings and property portfolio's performance.

With completely scalable charges, halo is as ideal for clients with one building, as it is for those with a substantial portfolio.

halo can make a positive impact on all types of properties, whether it's an office, factory, leisure centre, or college.

Producing outstanding results, halo has multiple benefits including saving energy, reducing carbon emissions, maximising comfort and minimising costs.



To find out more, and explore how halo can work for you, contact
 analytics4energy info@analytics4energy.net 0808 169 9951